

## **Planning and Zoning Minutes**

**June 13, 2023**

Members present: Hanover, Aarhus and Snyder. Absent: Hence, 1 empty seat. Chris Philipp, Zoning Official was present.

Meeting was called to order at 4:43 by Snyder.

Motion by Hanover to accept the May 9th minutes. Seconded by Aarhus. All ayes, motion carried.

Siting of a new dog park was a brief discussion. The previous site recommended by the Board has since been identified as a disk golf course site. Snyder motioned to recommend to council that the new dog park be sited at 3 empty lots including 600 and 602 Iowa Avenue and 35 Main Street, legal description as lots 1, 2 and 3 of A.P. #361. Seconded by Hanover. All ayes, motion carried.

Discussion of Official Zoning Map began by reviewing and considering the most recent copy of the city zoning map provided by Anderson/Bogart Engineering firm dated January, 2023. Motion by Aarhus to recommend to council adaptation of the January, 2023 Zoning Map as the Official Zoning Map for the City of Palo. Seconded by Hanover. All ayes, motion carried.

The Board considered a re-zoning sponsored by the city, of all Highway Commercial C-2 District along Vinton Street and 1<sup>st</sup> Street. This re-zoning is suggested to allow residential uses on the first floor of any building in this district. Currently several of the properties and buildings are currently being used as a residence and a few have always been used as a residence. Motion by Hanover to recommend to council that all properties zoned as Central Business District C-2 along Vinton Street and 1<sup>st</sup> Street be re-zoned as Highway Professional District C-3 to allow for residential use. Seconded by Snyder. All ayes, motion carried.

Discussion of updating the Comp Plan was not discussed at this meeting.

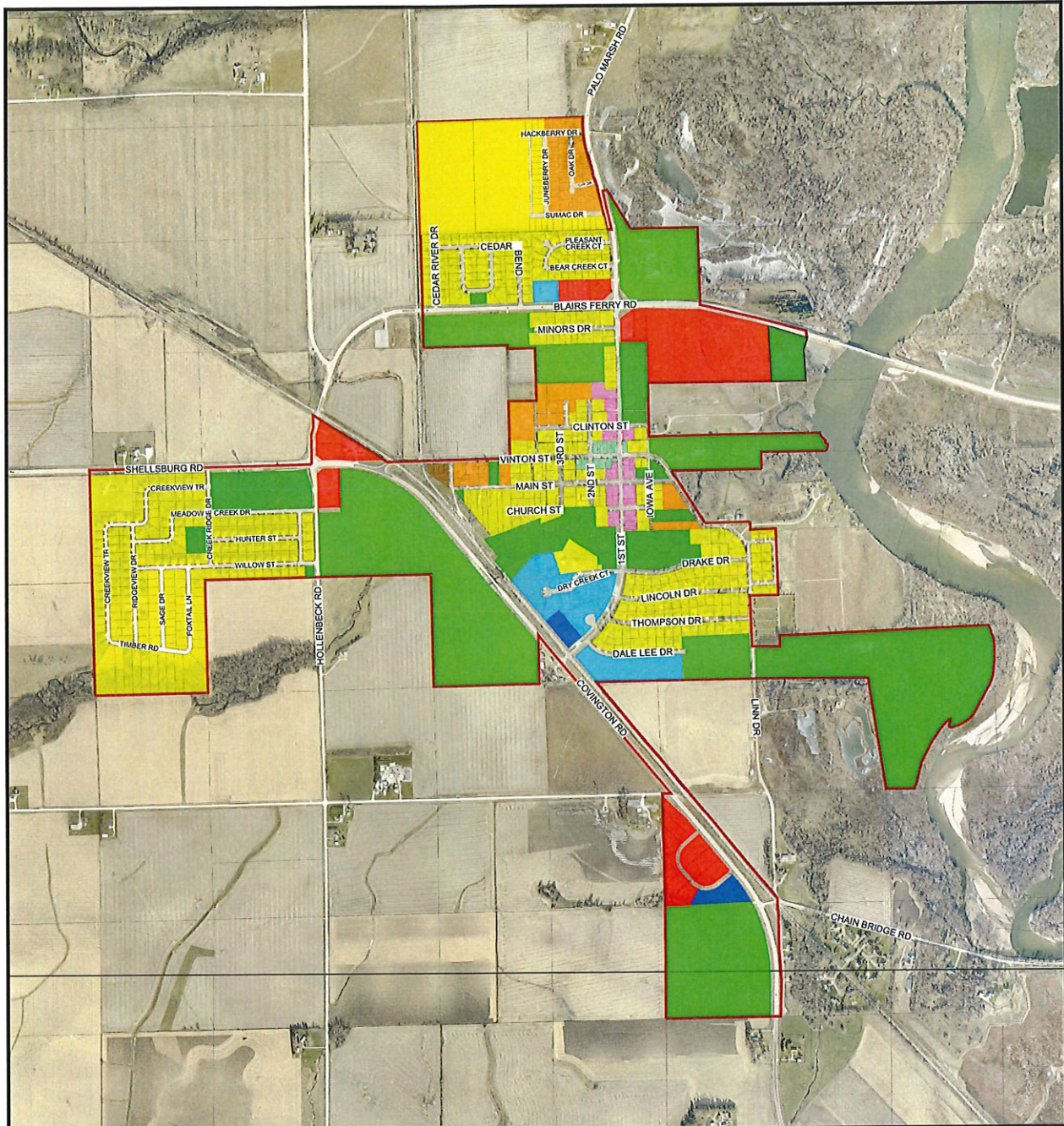
Motion to Adjourn by Hanover. Seconded by Aarhus. All ayes. Motion carries.

Meeting Adjourned at 5:04 pm

Minutes By Chris Philipp, Zoning Official





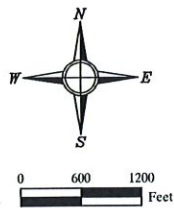


**ZONING LEGEND**

- PALO CITY LIMITS
- (A-1) AGRICULTURAL DISTRICT
- (C-1) HIGHWAY COMMERCIAL DISTRICT
- (C-2) CENTRAL BUSINESS DISTRICT
- (C-3) HIGHWAY PROFESSIONAL DISTRICT
- (M-1) LIGHT INDUSTRIAL DISTRICT
- (M-2) HEAVY INDUSTRIAL DISTRICT
- (R-1) SINGLE FAMILY RESIDENTIAL DISTRICT
- (R-2) MULTI-FAMILY RESIDENTIAL DISTRICT
- (P-1) PUBLIC USE / CONSERVATION
- MOBILE HOME

# PALO, IA

JANUARY, 2023



PREPARED BY:

**ANDERSON BOGERT**